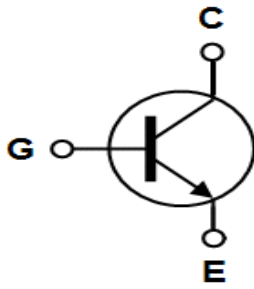
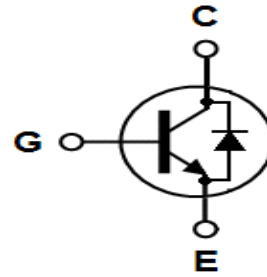




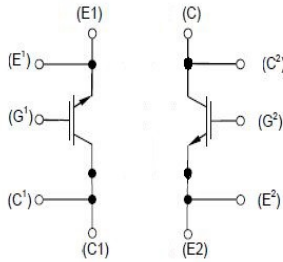
single



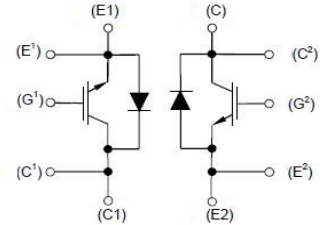
single +D



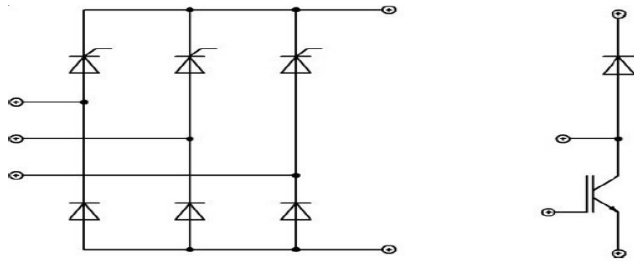
2x single



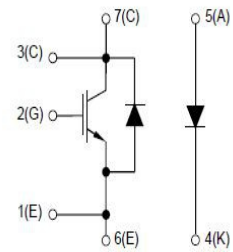
2x single+D



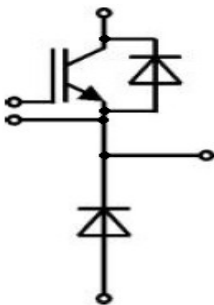
Bridge 3f-CB



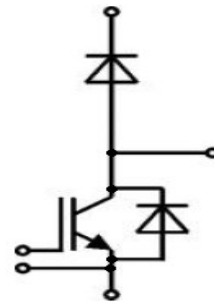
Chopper



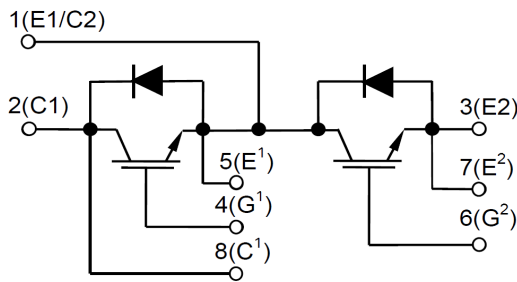
High side



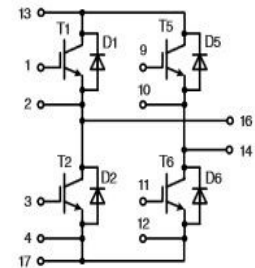
Low side



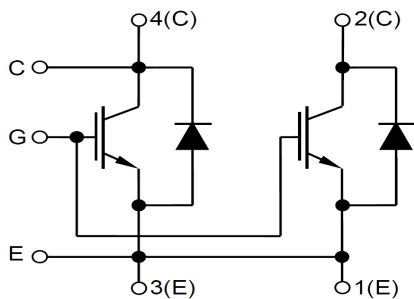
Half Bridge



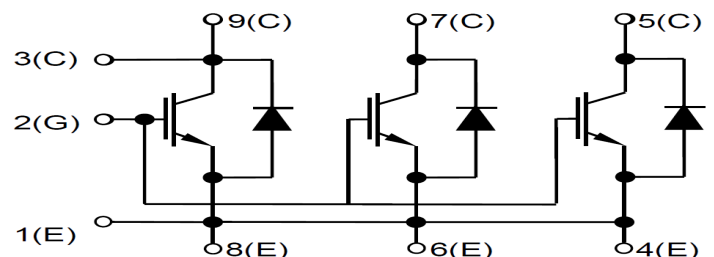
Full Bridge



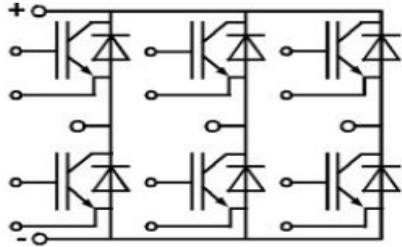
single (2T+2D)



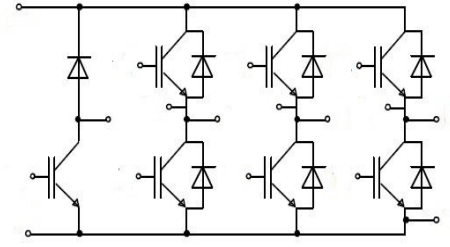
single (3T+3D)



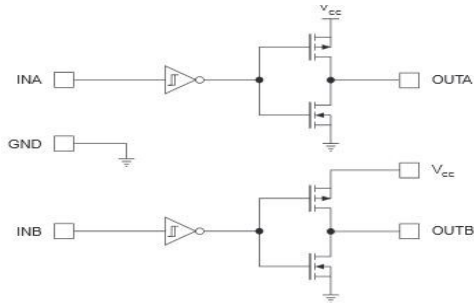
### Sixpack



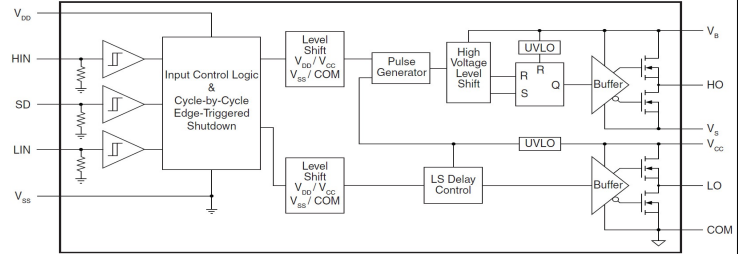
### Sevenpack



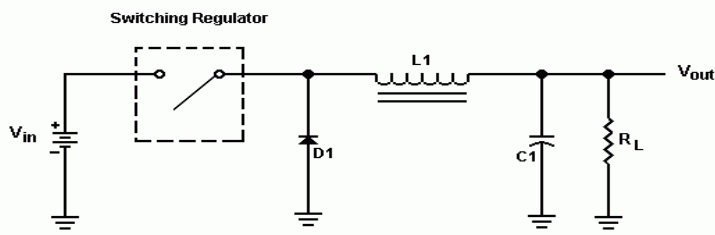
### 2x-Low side



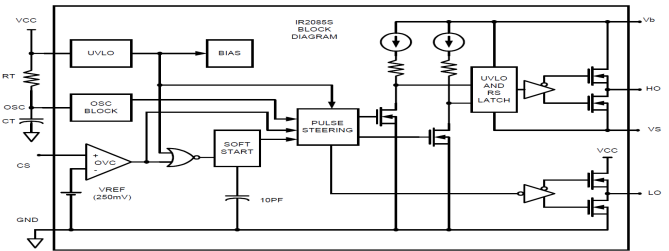
### Low+High side



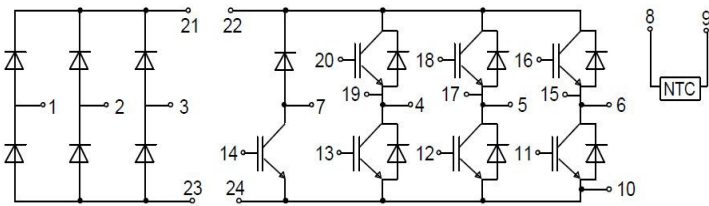
### Switching reg.



### Oscillating HB



### Converter - Brake - Inverter (CBI) Module



### ML Inverter

