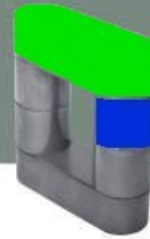


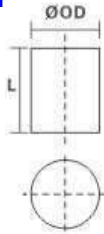
# Cylinder Cores



## Product Identification

■ Cylinder Cores

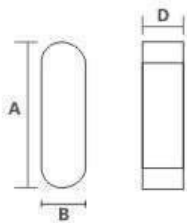
### BCC-Column



**SF 30 30 P -060**

Permeability: 60  $\mu$   
 Cylinder Cores  
 Height: 30mm  
 OD: 30mm  
 SF: Si-Fe S: Sendust H: High Flux

### BCB-Base



**SF 54 20 L -E15 -060**

Permeability: 60  $\mu$   
 Height: 15mm  
 Ellipse Core  
 Width: 20mm  
 Length: 54mm  
 SF: Si-Fe S: Sendust H: High Flux

Post Part No.	Dimensions		Cross Section Area (cm <sup>2</sup> )	Plate Part No.
	OD(mm)	L(mm)		
SF2020P	20	20	3.14	SF5420L
SF2424P	24	24	4.52	SF6424L
SF2525P	25	25	4.91	SF6725L
SF2727P	27	27	6.00	SF7428L
SF3030P	30	30	7.07	SF8030L
SF3035P	30	35	7.07	SF8030L
SF6030P	60	30	28.27	

Plate Part No.	Dimensions				Cross Section Area (cm <sup>2</sup> )	Post Part No.
	A Length (mm)	B Width (mm)	RC Radius (mm)	D Height (mm)		
SF5420L-E15	54	20	10.0	15	3.14	SF2020P
SF6424L-E18	64	24	12.0	18	4.52	SF2424P
SF6725L-E19	67	25	12.5	19	4.91	SF2525P
SF7428L-E21	74	27	13.7	21	6.00	SF2828P
SF8030L-E23	80	30	15.0	23	7.07	SF3030P

※SF ( Si-Fe ) ,S(Sendust) ,H(High Flux)and customized designs are also available.



# Cylinder Cores

## Product Identification

## ■ Cylinder Cores

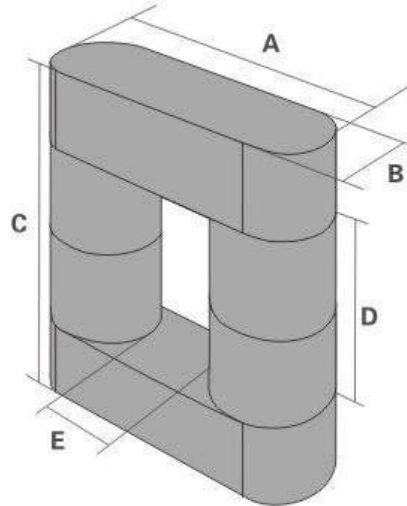


Plate Part No.	Post Part No.	1Leg Stack	Dimensions					Path Length (cm)	Cross Section Area (cm <sup>2</sup> )	Window Area (cm <sup>2</sup> )	A <sub>L</sub> (nH/N <sup>2</sup> ) ± 12%		
			A Length (mm)	B Width (mm)	C Height (mm)	D Inner Height (mm)	E Inner Length (mm)				026 μ	040 μ	060 μ
SF5420L-E15	SF2020P	1	54	20	51.4	20	14	12.41	3.14	2.8	99	127	191
		2	54	20	71.4	40	14	16.41	3.14	5.6	75	96	144
		3	54	20	91.4	60	14	20.41	3.14	5.4	60	77	116
SF6424L-E18	SF2424P	1	64	24	61.6	24	16	14.72	4.52	3.84	120	154	232
		2	64	24	85.6	48	16	19.52	4.52	7.68	90	116	175
		3	64	24	109.6	72	16	24.32	4.52	11.52	72	93	140
SF6725L-E19	SF2525P	1	67	25	64.2	25	17	15.41	4.91	4.25	124	160	240
		2	67	25	89.2	50	17	20.41	4.91	8.5	94	121	181
		3	67	25	114.2	75	17	25.41	4.91	12.75	75	97	146
SF7428L-E21	SF2828P	1	74	27.5	71.4	28	19	17.13	6.00	5.32	136	176	264
		2	74	27.5	99.4	56	19	22.73	6.00	10.64	103	133	199
		3	74	27.5	127.4	84	19	28.33	6.00	15.96	83	106	160
SF8030L-E23	SF3030P	1	80	30	77	30	20	18.4	7.07	6	150	193	290
		2	80	30	107	60	20	24.4	7.07	12	113	146	218
		3	80	30	137	90	20	30.4	7.07	8	91	117	175

※SF ( Si-Fe ) ,S(Sendust) ,H(High Flux)and customized designs are also available.