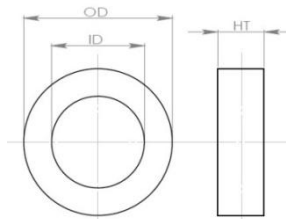


# Lja T 9020-NC



----	OD (mm)	ID (mm)	HT (mm)	Le(cm)	Ae(cm <sup>2</sup> )	GW(g)
<b>Case Dimensions</b>	95.4 MAX	54.7 MIN	24.7 MAX	-	-	397 Ref
<b>Core Dimensions</b>	90	60	20	23.6	2.34	

Note

Le Magnetic Path Length

Ae Effective cross section area

GW: Gross weight.

## Electrical Characteristics

INDUCTANCE	Turns	Testing Condition	Testing Equipment
<b>61~118 μH</b>	1Ts	10kHz/0.3V	TH2816B

## Material Characteristics

NO.	Item	/Unit	Reference value
1	(Bs) Saturated induction density	T	1.2
2	(μi) Permeability	Gs/Oe	8×10 <sup>4</sup>
3	(Tc) Curie Temperature	°C	570
4	(ρ) Density	g/cm <sup>3</sup>	7.25
5	(δ) Resistivity	uΩ.cm	130
6	(k) Stacking Factor	-	> 0.75