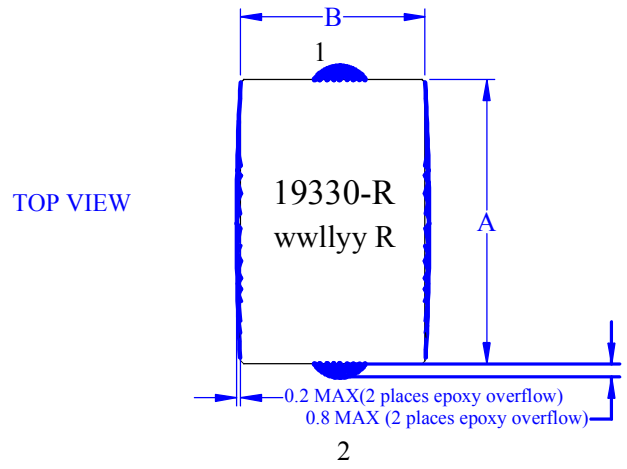
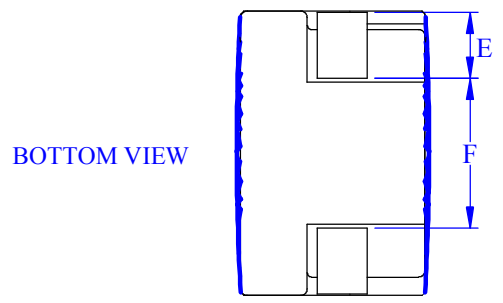
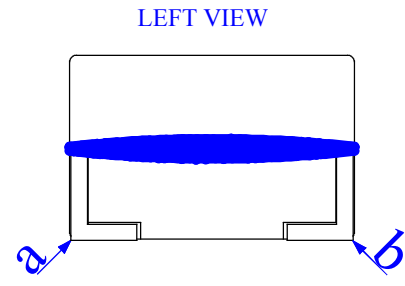
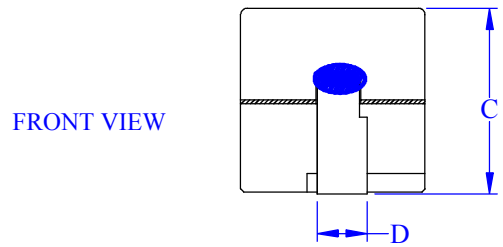


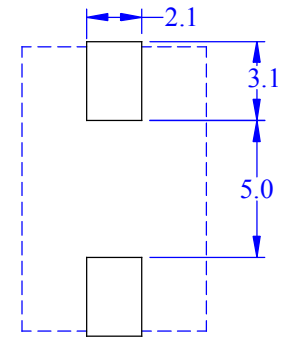
MECHANICAL DIMENSIONS



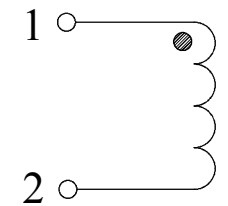
- A= 11.0 Max.
- B= 7.20 Max.
- C= 7.20 Max.
- D= 1.90±0.15
- E= 2.50±0.2
- F= 5.80 TYP.



RECOMMENDED PCB LAYOUT



SCHEMATIC



Notes:

- 1). All dimensions are in mm unless otherwise specified.
- 2). Tolerances are +/- 0.15 millimeters unless stated otherwise.
- 3). All soldering surfaces must be coplanar within 0.10 millimeters.
- 4). PCB tolerances are +/-0.1 millimeters unless stated otherwise.
- 5). Stamping: 19330-R = P/N
wwllly R= (DateCode) (Revision)
- 6). DCR test at point a and point b
- 7). Environmental compliance requirement (Refer Cooper Bussmann files: F306B-003-03 & CBA309A-001):
 - (a) RoHS
 - (b) REACH
 - (c) PFOS & PFOA
 - (d) Halogen free

Cooper Bussmann

**High Current Power Inductor
(Flat-Pac 12*7.5)**

2 Pads, SMT

Size	Drawing Number:	CTX01-19330-R
A	Revision Level:	X2

